

GREATER YELLOWSTONE WILDLIFE HABITAT BANK

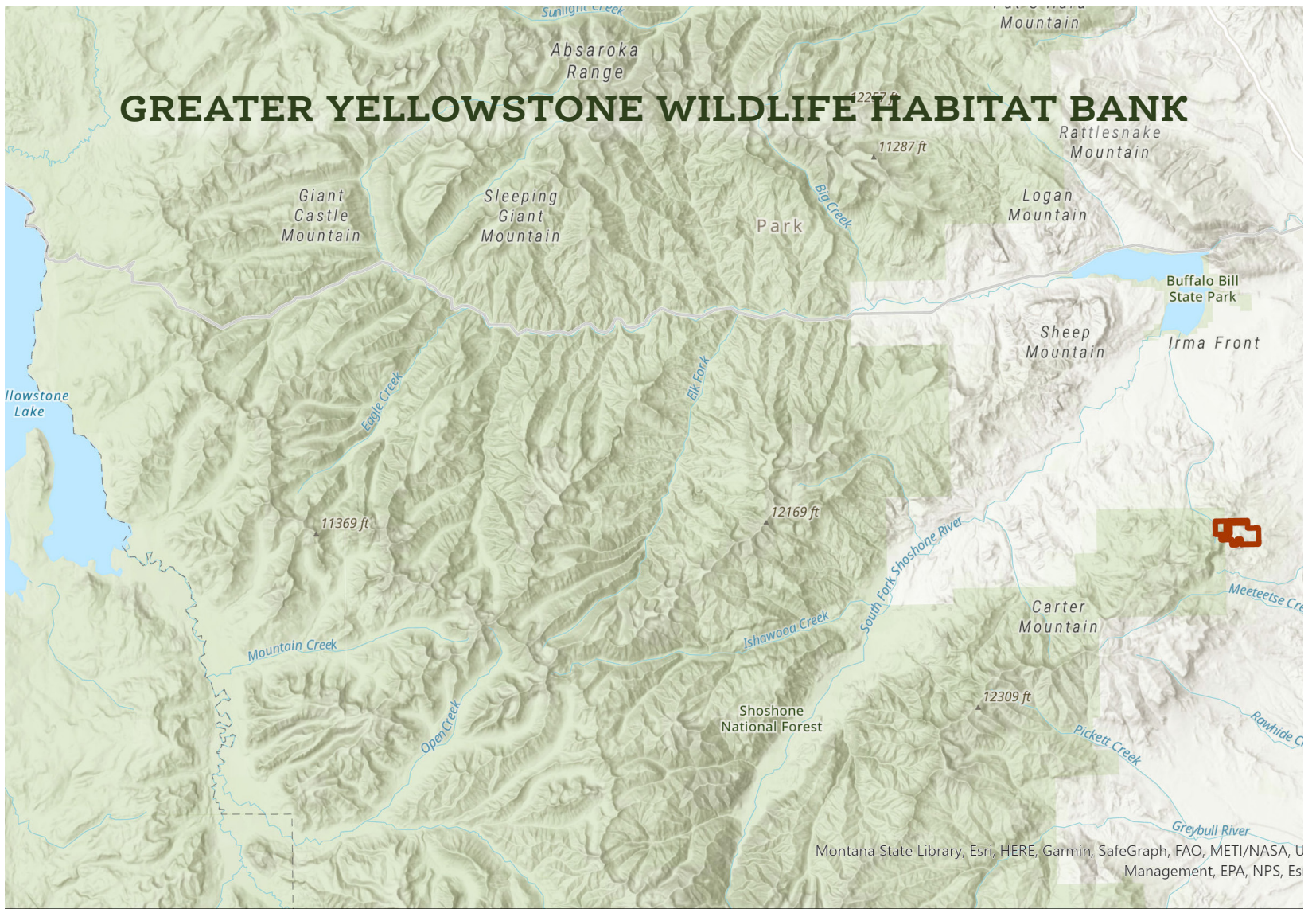
Bordering the Shoshone National Forest and just 40 miles from Yellowstone National Park, the Greater Yellowstone Wildlife Habitat Bank contains some of the region's most sensitive habitat for grizzly bears, gray wolves, mule deer, elk, and numerous other Yellowstone species native to this ecosystem. In the area considered the gateway to Yellowstone, this property supports sensitive year-round habitat for many species, including breeding and denning habitat for grizzly bears.

Biological surveys, photo points, and remote camera plots have documented extensive use by moose, mule deer, gray wolves, elk, black and grizzly bears, cougars, bobcats, and many other species including juveniles of multiple species.

This project has a complete suite of biological exhibits containing all of the wildlife and vegetation data necessary to support some of the highest quality biodiversity credits in the region. This Bank is anticipated to be finalized by Fall 2023.



MORE INFORMATION ON BACK



 Greater Yellowstone Wildlife Habitat Bank

Location:

Northwestern Wyoming

Size:

1,057 Acres

Available:

Jan. 2024

Price:

\$10,000 – \$15,000/Credit

Primary Species:

Grizzly Bear, Gray Wolf, Cougar, Moose, Elk, Mule Deer

Carbon:

Third-Party Certified Biodiversity Project With Carbon Data Available.

Endowment Account:

Yes

Campaign Goal For Project:

\$12,000,000 For Phase 1.

Donor Access:

Yes – Lead Donors To Have Access.

Map Of Ranch/Location:

Near Cody, Wyoming